



HEALTHY PARTNERS

YOUR GUIDE TO HEALTHY LIVING • FALL 2014

Nunnally House

Offering families a *stress-free* place to stay PAGE 6



Better Than Ever
Breast cancer care continues to improve, and so do survival rates
page 8

Hip, Hip, Hooray!
A second hip replacement helps local man regain an active lifestyle
page 10

Tell Me About It
Verbal apraxia makes talking tough. Wolfson Children's can help flip the switch
page 12

That's ARThageous!
Raising funds for cancer programs.
Page 4



Nunnally House

Offering patients' family members a *stress-free place to stay* during stressful times

Since the opening of the newly constructed Nunnally House in May, activity has been much busier than anticipated. The biggest surprise has been the number of family members from out of the area who have stayed at Nunnally House because of family members who are critically ill or injured.

"We knew there was a need, but we didn't realize just how great it

would be," says Gary R. Colberg, FACHE, president & CEO, Southeast Georgia Health System. "These patients and family members are going through one of the most difficult periods in their lives. It is so rewarding to be able to help meet their needs and hopefully make things a little easier for them during such a difficult time."

Nunnally House, located adjacent to the Southeast Georgia Health System Brunswick Campus, includes three distinct areas for lodging, with 15 rooms for cancer patients, eight rooms for family members of critical care patients and 17 rooms for medical students and on-call staff.

Krista Robitz, director, Development, Southeast Georgia Health System Foundation, reports that during the first six weeks the Nunnally House was open, there were 14 families of critical care patients in need of lodging.



Comforting gathering spaces.



This includes family members from other parts of Georgia, as well as states as far away as New Hampshire and California. “These are folks that may show up any time of the day or night because they have a family member in the Health System’s intensive care unit (ICU). They are pretty stressed because of their situation, so we respond very quickly to help meet any needs they have.”

In spite of how busy it has been, Nunnally House has not turned anyone away, Ms. Robitz says. “We have eight rooms designated for family members of critical care patients, but when family members come to stay with us, they may need one room, two rooms or even up to four rooms. We have been able to handle the overflow by putting them in available rooms that are designated for cancer patients or medical students.

RAVE REVIEWS

Comments in the Nunnally House guest book include a family member from California who wrote, “When my dad fell ill while on the road, we didn’t know what we would do or where we would stay being so far from home and him being in the ICU for so long. This beautiful house has saved us and allowed our family to be with my dad in his deepest time of need.” Another family member from New Hampshire wrote, “You are so wonderful to your guests. Thank you!”

Nunnally House also provides lodging for cancer patients who live out of the Glynn County area. Usually cancer patients stay anywhere from one to eight weeks. “We’ve had incidences in the past where cancer patients had to cancel their treatments because they either didn’t have transportation or they could not afford the cost of gasoline to drive back and forth from their homes every day for several weeks,” says Bryan Thompson, coordinator, Nunnally House, and Development, Southeast Georgia Health System Foundation. “Many of our guests have told us that without Nunnally House, they would not have been able to get their cancer treatments.”

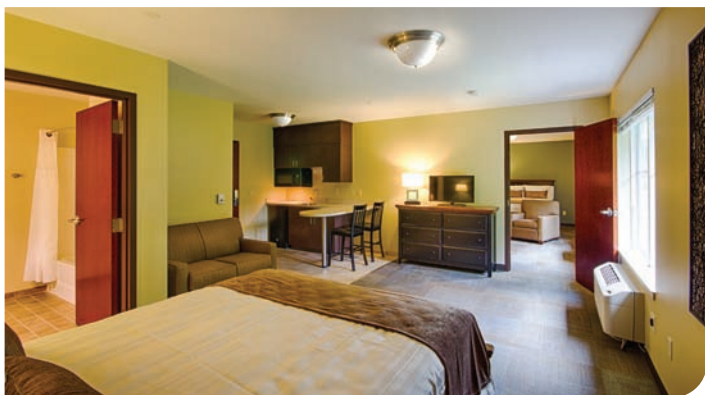
Call

CALL FOR LODGING

To receive information about Nunnally House lodging, call [912-466-7550](tel:912-466-7550). Donations to Nunnally House are always welcome and can be made by contacting the Southeast Georgia Health System Foundation at [912-466-3360](tel:912-466-3360).

Comments recorded in the Nunnally House guest book by cancer patients and family members who accompanied them include a patient who wrote, “You have been a godsend for me and my family,” and a daughter who wrote, “Thank you for letting my mom stay here. I don’t know what we would do without this wonderful place.”

Mr. Thompson adds that everyone who stays at Nunnally House remarks how impressed they are with the home-like feel. “That is the perspective we take. While they are here, this is their home, and we do whatever we can to make them feel safe and comfortable.”



Spacious home-like rooms.

HOW NUNNALLY HOUSE BECAME A REALITY

Construction of the Nunnally House, along with all the furnishings, was made possible by a gift from Hugh Nunnally and his family.

Inspired by the purpose and design, Mike and Lucia Gumaer, avid gardeners and Friends of the Foundation, generously offered to enhance the exterior landscaping. With an appreciation for the healing qualities of nature, the Gumaers personally selected mature palms, ligustrums and a wide array of flowering plants and shrubs for the grounds. They further enhanced the beauty and peacefulness of Nunnally House by designing a tranquil outdoor patio area with brick walkways, comfortable seating, umbrella shades and quietly flowing fountains.